

Tshishe-
utshimau-
mashinaikan eka
e animanakuak
anite uatakanniti
auen
utipenitamuna
mak
utipenimitishun



KA TAKUAIMATAK MAK KA UAUETASHTAKANIT MASHINAIKAN

Julie Dumontier

Ka tshitapatak tshishkutamatunnu mak ka uauitshitunanut

Ka takuaimatakanit e nanatuapatitshenanut, katshishkutamatunanut, ka uauitshitunanut mak e pimipanitakanit aimun.

KA UT UAUESHI-TSHITAPATAKANIT

Ka takuaimatakanit e nanatuapatitshenanut, katshishkutamatunanut-ka uauitshitunanut, mak e pimipanitakanit aimun

KA ASHUSHTAT

Philomène Jourdain, Uashat

KA UAUESHI-TSHITAPATAK INNU-AIMUNNU

Judith Mestokosho

KA TAKUAIMATAK ATUSSEUNNU

Institut Tshakapesh

KA MISHKUENITAK TSHE ISHINAKUTAKANNIT MASHINAIKANNU

Marlène-b.com

Eshi-takuak tshekuan ute mashinaikanit tapuetakanu tshetshi akunishhepanitakanit mishu uitakaniti tanite uetshipanit.

Dépôt légal — Bibliothèque et Archives nationales du Québec — 2016
Bibliothèque nationale du Québec

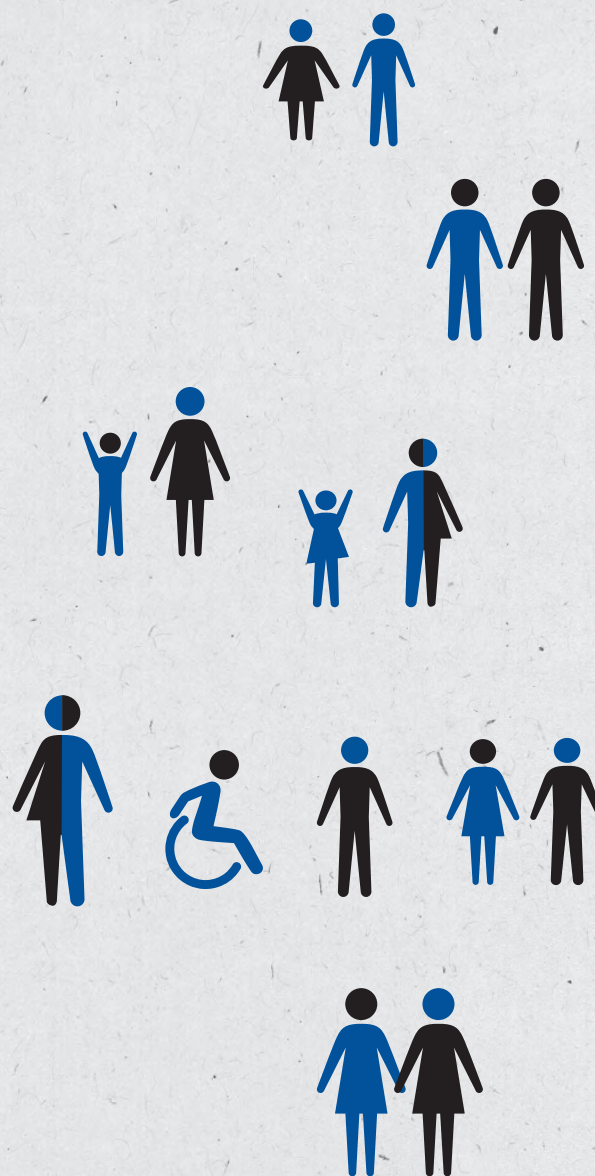
ISBN : 978-2-550-76510-3

Ume mashinaikan tshetshi apashtakanit anite katshishkutamatunanut mak namaieu iapashtakanit anite kauaeshtakanit.

Mamuitun auenitshenat utipenitamunuaa mak kaiauassiuht utipenitamunuaa nashkumeu Éducaloi e uauitshiaushiniti tshetshi tutakanit ume mashinaikan ushkat e unuipanit.



SAVOIR C'EST POUVOIR





Tshishe-utshimau-mashinaikan anite uatakaniti tipenitamuna mak tipenimitishuna tshishpeuatakanua anite tipenitamuna mak tipenimitishuna.

Eukuan takuaimatsheun anite ushkat meshta-apatenitakuak mak at kutaka takuaimatsheuna ute Uepishtikueiau-assit tshipa ishpitevitakannua mishue anite utin.

At ma ne tshishe-utshimau-mashinaikan meshta-apatatak kassinu anite tshetshi minuenimunanut, apu shuk tshikaenitakuak tshetshi minu-nishtutakanit.

Tshetshi minu-nishtutatishunanut Mamuitun auenitshenat utipenitamunnuaua mak kaiauassuiht utipenitamunnuaua mashinaikan eka e animanakuak anite uatakanniti auen utipenitamuna mak utipenimitishun anite mashinateua 1 nuash 48 e passetshinakanit.

Nakatuenuita! Ute eshi-mashinataikanit nauashu, tshetshi ume atusseuatshenanut anite katshishkutamatunanut apu apashtakanit anite kauaueshtakanit.

Namaieu ume tshitshue Tshishe-utshimau-mashinaikan tipenitamuna mak tipenimitishuna uatakaniti.

Neme tshitshue Tshishe-utshimau-mashinaikan anite uiatakaniti tipenitamuna mak tipenimitishuna tshika tshitapatenau ui uaueshitaieku eishpanit anite takuaimatsheunit kie ma anite ka uauitshiakaniht anitshenat kauaueshiakaniht.

Ui kukuetshimuieku anite tshitapatamik^u etashtet Webetashtet www.cdpcj.qc.ca kie aimik^u anite 1 800 361-6477 eka tshishikashunanut.

ESHI-MASHINATET UTE MASHINAIKANIT

4 Tipenimitishuna mak tipenitamuna ushkat meshta-ishpitevitakuaki (mashinaikanit 1 nuash 9)

11 Etashtet uet passetshinakanit Tipenitamun tepishkut tshetshi ishinakuak tshetshi nishtuapatakaniti mak nashakaniti neni tipenitamuna mak tipenimitishuna (eshkushtet 10 nuash 20)

23 Etashtet uet passetshinakanit Tipenitamuna tshishe-utshimau-aitun eshkushtet 21 mak 22

25 Etashtet uet passetshinakanit Tipenitamuna kauaueshtakanit (eshkushtet 23 nuash 38)

35 Etashtet uet passetshinakanit Tipenitamuna pakassiun mak mamu katananut (eshkushtet 39 nuash 48)

Tipenimitishuna
mak tipenitamuna
ka mishta-
ishpitenitakuaki



Eshkushtet 1



Tipenimitishuna
mak
tipenitamuna
ka mishta-
ishpitenitakuaki



1

Ishinakuan tshetshi:

• Inniuin

• Akua tshetshi tutakauin (shutshenitamun)

Tipenitamun tshetshi shutshenimitishn tsheshpeuatikauin ashit umenua kutaka e uitakaniti miam tshetshi mashikakauin kie tshetshi ushikuikauin tshiat.

Tsheshpeuatikauin iapit tshimitunenitshikanit mak ishinakuannu kamakunueshiht tshetshi aieshkunaht ukupaniemuaua, tshetshi uenashk aitutakauin mak tshetshi akua ishkuatet anite etain.

• Tshetshi minuinniut auen uiat

Tipenitamun tshetshi minuinniut auen uiat, tsheshpeuatikauin miam tshetshi natu-tutakauin kie anite uiesh tshekuan eshpanit miam tshetshi katshitaukauin anite tshiat, tshimitunenitshikanit kie meshta-katshitaukauin. Ne tipenitamun tshiminikun mate tshetshi tapuetamin kie ma eka tapuetamin tshetshi natukuikauin.

• Tshetshi tipenimitishun

Tipenitamun tshetshi tipenimitishun tshiminikun tshetshi tshin tutamin tshekuan mak tshetshi minu-utinamin tshe aitin tshetshi mishta-minu-uauitshikauin eka e natshinikauin anite ut upime.

Iapit tshikanueniten ume eshnikatet « auen ka uaeshtitshut utinniunit ».

E minu-uitakanit

Auen tshika ui kanuenitam^u umenu «auen ka uaeshtitshut utinniunit» tshetshi nashak utipenitamuna mak utipenimitishuna. Tsheshu, kassinu auen katshitanam^u nenu «auen ka uaeshtitshut utinniunit» shash anite uet inniut kie minu-kanuenitam^u nuash tshe nipit.

2

Ishinakuan tshetshi uauitshikauin miam kueshtikuak tshekuan eshpanit anite tshitinniunit.

Ek^u ait ishpaniti, tshika ui uitshiau kutak auen miam kueshtikuanniti aishpanit anite utinniunit, uenashk tshika uitshiau ne ua issishuenanut, tshetshi eka ashuapatamin, muk^u tshe eka tshekuan tutamin miam ishinakuak tshetshi kushtikuak anite tshitinniunit kie ma kutak auen utinniunit. Ne uin ishpaniti, uemut tshika ui uishamauau auen tshetshi natshi-uitshitak^u.



Tipenimitishuna
mak
tipenitamuna
ka mishta-
ishpitenitakuaki

3

Tshitipenimitishuna umeni:

• Tipenimitishun aiamieun

Uemut eshinakuak tshitipenitamun tshetshi kanuenitamin tapueienitamun eshi-naushunamin, tshetshi nashatamin mak tshetshi uitamin nasht eka e shetshishin kie ma tshetshi nanutshikauin. Ishinakuan kie eka ui nashatamini tan ua ishinakuak tapueienitamun.

Tshishe-utshimau apu tshi shitshimat utinnima tshetshi nashataminiti peiku aiamieunnu kie ma tshetshi anu peik^u minu-itinak nenu eshi-aiamianannut.

• Tipenimitishun tshimitunenitshikanit

Tshin ishinakuan tshetshi naushunamin ishpitenitamuna, tapueienitamun mak eshi-pimutenanut tshetshi tshissinitaikauin tshitinniunit.

• Tipenimitishun tshetshi auen uitak etenitak

Tshitipenimitishun tshetshi itenitamin tan ua ishinakuak tshekuan. Tshipa tshi peikutau iteniten miam etenitahk anitshenat kutakat kie ma tshetshi eka peikutau itenitamek^u.

• Tipenimitishun tshetshi uitamin etenitamin

Mishta-mishau ne tipenimitishun auen tshetshi uitak etenitak kie mitshetuait eshinakuak tshetshi uitamin eshi-mishkuenitamin tshekuan tshetshi tutamin kie tshitaimun tshetshi patshitinamin: atusseu-kaminunakutakanit tshekuan, e mashinaitshenanut, e patshitinakanit aimun, e nimashkuaitshenanut miam tshepikapaunanuti, kie kutak tshekuan. Tshiminikun mate tshetshi uitamin etishkakauin aiamieun kie ma eshi-uauitakanit tshishe-utshimau-aitun.

Tshiminikun iapit tshetshi nishtuapatamin kie tshetshi petamin kutakat auenitshenat aitenitahk.

• Tipenimitishun kamamuitunanut

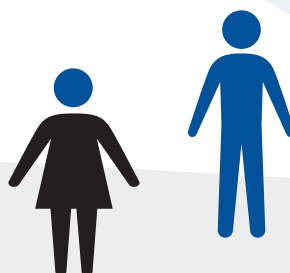
Tipenimitishun kamamuitunanut tshitishi-minikun tshetshi tain anite ne peik^u kamamuitunanut, miam mate ka mamuituht kaiatusseshiht kie ma anite ne metueun ka uepauakanit tuaniss.

Tshitishi-minikun iapit tshetshi nakatamin ne kamamuitunanut eka ui taini anite.

Tipenimitishun anite mamuitun ka tshipikapaunanut (syndicat).

• liberté de réunion pacifique

Tshitshi ituten anite ka tshipikapaunanut kie ma anite kamishta-utshimau-aiminanut. Muk^u apu tshika ut ui matshipanitain anite.



Tipenimitishuna
mak
tipenitamuna
ka mishta-
ishpitenitakuaki

4

Ishinakuan tshetshi ishpitenimikauin:

- **Eshpitenitakushin**

Ishpitenitakushun, eukuan tshetshi ishpitenimakanit kassinu papeiku auen eshinnutishit.

- **Tshitimaunenimeu**

- **Eka pikuatshimikauin**

Eka tekuaki ishpitenitamun anite tshitipenitamunit tshetshi eka pikuatshimikauin mak eshpitenitakushin, mitshetuait tshipa tshi ishinakuan. Miam mate tshipa tshi ishinakuan auen tshetshi mishituepanitat katshinaunnu tshin e uauinikauin. Eukuan ne eshinkatet « auen ka pikuatshimakanit ».

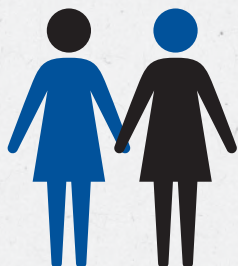
5

Ishinakuan tshetshi ishpitenimikauin anite tshin tipan tshitinniunit.

E minu-uitakanit

Ne tipenitamun tshitshishpeuatikun anite tshin tipan eshi-inniuin, mak tshitaimatsheu passe nenua eshi-uauinikauin tshetshi eka natshi-uapatakaniti kie ma tshetshi mishituepanitakaniti: tshin eshinakushin (miam mate tshitakunakanat), tshiau (miam mate apishish e utinakanit tshimiku), uitishkueua ishkuue ka minuatat kie ma uitapeu ka minuatat napeu, tshiminuinniun, anite epin, eshinakuak tshin tshitinniun kie tshikanishat utinniunnuau kie kutak tshekuan.

lapit tshitshishpeuatikun tshetshi tutamin tshekuan meshta-itenitakuak tshin e katshitaukauin.



Tshishe-utshimau-mashinaikan eka e animanakuak anite uatakanniti auen utipenitamuna mak utipenimitishun



Tipenimitishuna
mak
tipenitamuna
ka mishta-
ishpitenitakuaki

6

Ishinakuan tshetshi apashtain kie **minu-utinamatishun nenua tshimatshunishima** muk^u ishpish ui apashtain kie eka auen e nutshishk^u. Tshipa tshi auishun, ataatshen, minat kutak auen kie ma ait ishi-uapatamin tshin tshetshi tutamin. Muk^u ne Jauetashueun tshipa tshi nakaim^u nenua tipenitamuna.

Miam mate

Tshitapukuakan ishkuue kie ma napeu apu tshika ut tshi tshimanat mishtikua tshetshi eka tshi uapatamin anite ut tshipashpaukanit tshitshit.

Miam mate

Anitshenat ka tipenitahk ka auishunanuti mitshuapa, apu tshi shetshen unuitishauat auennua anite epiniti. Tshika ui ishpitenitamueuat utipenitamunnua.

7

Auen tshika ui **tapuetuau** tshetshi pitute-takusset anite tshitassit kie ma anite tshitshit. Ne auen shash anite tati, tshipa tshi natuenitamau tshetshi tshitutet.

E minu-uitakanit

Tshipa tshi tapuetuau ne auen e minu-uitamut kie ma tshetshi ishi-aimit tshetshi nishtutashk (miam mate: tshishenamuau tshitshishtukannu ekue minit tshetshi pitutshet).

Miam mate

Kamakunuesht tshika ui katshitinam^u tapuetamunnu kie ma peik^u auennua uetshipannit anite kauaueshtakannit eshk^u eka pitutshet tshitshit kie ma anite epin. Muk^u iapit takuanna ait eshi-pimutenanut, miam mate: ua utshepinanuti.



Tshishe-utshimau-mashinaikan eka e animanakuak anite uatakanniti auen utipenitamuna mak utipenimitishun



Tipenimitishuna
mak
tipenitamuna
ka mishta-
ishpitenitakuaki

8

Nashpit apu tapuetakanit **tshetshi pitutshenanit auen uitshit** eka tapuetaki. Tshika ui tapuetam^u ne auen tshetshi utinakannit tshekuanu anite tekuannit uitshit.

E minu-uitakanit

Ume eshkushtet peikutau itashteu anite eshkushtet 7. Muk^u apu ne katshitaikannit ne auen utassi kie ma uitsh. Iapit Katshitaikanua umenua miam atauitshuapa, kamitshishunanut, ka tshishtikanikatet assi, mitshishutshuapa, kamatau-pikutakaniti, mitshuapa anite ka metuenanut, assit anite kamanukashunanut, kie kutaka.

9

Passé auenitshenat tshika ui ishpitenitamuat tshetshi eka mishituepanitakanit aimun, ne ua issishuenanut tshika ui kanuenitamatusuat tshetshi eka mishituepanitaht **eshi-minitau aimunnu** anite utatusseunuat.

Anitshenat auenitshenat apu ishinakuannit **tshetshi uitahk aimunnu eshi-patshitinakannit**, auat anite kauaueshtakanit e uitakanit. Muk^u tshipa tshi minauat tshetshi uitahk. Uauetashueun tshipa tshi ishi-natuenitamak^u **tshetshi uemut uitakanit ka ishi-patshitinamin tshitaimun** anite e tshitapatakanit passe tshekuan aishpanit.

Anite kauaueshtakanit nanitam tshika ui nakatuenitakanu tshetshi ishpitenitakannit tshetshi eka mishituepanitakannit aimun.

E minu-uitakanit

Uauetashueun shitshimeu mitshet auennua tshetshi ishpitenitaminiti, tshetshi eka mishituepanitakannit aimunnu. Anitshenat ui uinakanuat ka mishta-itenitakuannit utatusseunnuau (kaimishiht ishkieu kie napeu, kaimishiht ka atusseshtahk nishtutatun-mashinaikana, natukunishat, mitunenitshikan-natukunishat kie kutakat), kauapikueshiht mak kutakat tapueienitamunnu ka ishi-atusseht.

Shaputuepanu nete min e passikueietshinakanit...

Tshishe-utshimau-mashinaikan eka e animanakuak anite uatakanniti auen utipenitamuna mak utipenimitishun



Tipenimitishuna
mak
tipenitamuna
ka mishta-
ishpitenitakuaki



Eshi-patshitinamut aimunnu kutak auen anite etat ka mishta-itenitakuannit atusseunnu kie ma tapueienitamunit ka taht, apu anite tshi tshishpeuatakanit ne e uitakanit eka ka mishituepanitakanit aimun.

Miam mate: patshitinamini tshitaimun anite mamu e uashkapiék^u ashpi-mitshishuakanit, apu ne ishinakuak tshitaimun tshetshi eka tshi mishituepanitakanit, iapit tshuitsheuakanat natukunishiutau. Eukuan tapue eshinakuak, neme tekuak tshetshi eka mishituepanitakanit aimun patush anite miam natshishkutau tipan anitshenat anite ka mishta-ishpitenitakuannit utatusseunnuau, ekute patush ka tshi tshishpeuatakanit tshitaimun.

Tshin muk^u uetshit tshitaimuna tshishpeuatakannua. Miam tshipa tshi ishinakuan ne iapashtain ka issishuenanut, eshi-uauinakauin anite mashinaikanit kie ma ka mashinataikaniti aimuna anite tshimashinaikanit. Tshipa tshi utinakanu tshin eshi-uinikauin kie ma muk^u tshiam katshi natshishkut auen eshinakuannit tshetshi ishpitenitak ne eka ka mishituepanitakanit aimun.

Uauetashueun nanikutini takuannu tshetshi uitak ka ishi-patshitinamin aimun. Ishinakuaki ne tshitaimun eka ka tshi mishituepanitakanit tshetshi ushimutuanut inniun (miam mate peik^u kaiakushit ui natu-tutatishut, ishkuéu, napeu).

9.1

Tshitipenimitishuna tshika ui nashen kie tshitipenitamuna ka mishta-itenitakuaki (eshkushteti 1 nuash 9) ne e tshitapatakaniti ishpitenitamuna mishue ka pimutakaniti, kie minuenimun tshetshi takuak anite Uepishtikueiau-assit.

Tshipa tshi ishinakuan, uauetashueun tshetshi nakaik tshitipenimitishunnua mak nenua tipenitamuna ka mishta-itenitakuaki.

E minu-uitakanit

Tshitipenitamuna punipanua miam kutakat auenitshenat utipenitamunnuaua e tshitshipanniti. Tshipa tshi ishinakuan apishish ait tshetshi ishpanit kie ma uauetashueun uitaki tshetshi nakaikannit kie ma tshetshi eka tshi nashamin tshitipenimitishuna mak tshitipenitamuna miam tshin ka ishi-pakushenitamin.

Tipaikatshetau peik^u utshimau-kaiatussesht ua tshitaimatshet passe nenu eitishakanniti pishkueuna anite mushaueutshuapit tshetshi ne auen akua tutuakanit. E tshitapatakanit ne eshinakuak atusseun, tshipa tshi ishinakuan tshetshi eka tshitaimatshenanut tapuetakaniti anite ut Tshishe-utshimau-mashinaikanit at shuk nakaikaniti anite anitshenat kupanieshat -utipenimitishunnua tshetshi nukutaht.

Tshishe-utshimau-mashinaikan eka e animanakuak anite uatakanniti auen utipenitamuna mak utipenimitishun



Tipenitamun
tshetshi tapishkut
auen ishi-
nishtuapamakanit
mak tshetshi
nashak
utipenitamuna mak
utipenimitishuna



Eshkushtet 1.1



Tipenitamun
tshetshi tapishkut
auen ishi-
nishtuapamakanit
mak tshetshi nashak
utipenitamuna mak
utipenimitishuna

10

Ishinakuan tshetshi tapishku tutakauin ashit kutak auen, ne ua issishuenanut nenua tipenitamuna mak tipenimitishuna tekuaki anite Tshishe-utshimau-mashinaikanit tshitshishpeuatikun miam kutak auen, tan ua itenitakushin. Apu tshi ashpatshishimuatsHENANUT nenua passe tipan tshin aitenitakushin tshetshi ut eka tshi minu-nashamin tshitipenitamuna kie ma tshitipenimitishuna.

Ne tipenitamun tapishku auen tshetshi tutuakanit tshitshishpeuatikun tshetshi eka takuak **ne eka ka minu-utinakanit auen** anite uetshipanit e tshitapatakannit **auen aitenitakushit** miam umenua (eukuan ne eshinikatet «aimuna eka ka tapuetakaniti, ne e uitakanit eka ka minu-utinakanit auen»):

- **tipan eshi-inniuht auenitshenat, eshinakushiniti ushakauaia, anite uetshipaniht mamu ishinniuht kie ma auenitshenat uetshipaniht anite aishinakuak ne assi**

Tipan eshi-inniuht auenitshenat eukuan ne iapashtakanit aimun tshetshi tatipan ishi-uinakanit anite uetshipaniht e tshitapatakannit uiauaia kie ma utaitunnuau e tshitapatakannit, nasht eka e nanatuapatakanit tshetshi ut mishta-tshissenitakanit tshekuan.

Tshin uetshipanin tipan mamu aitenitakushinanut kie ma anite assi uet inniun, ne aitenitakushin tshinukushin anite tshitaitunit kie ma anite anite assi uet inniun.

- **eshi-uinitishut kie ma eshi-utinitishut utinniunit**

Miam ne ui uitakanu ishkuieu uitishkuieu menuatat kie ma napeu menuatat uitapeua.

- **etatupipuneshinanut**

Uauetashueunit tshipa tshi uitakanu auen tshipa ui itatupipuneshu tshetshi nashak utipenitamuna, eka e takuak tshetshi auen eka minu-utinakanit. Miam mate, uemut enuet tshika ui kutunuepipuneshu ashu nishuaush tshetshi mashinatautishut meshinatautishunannuti kie ma tshetshi aiat ishkuuapunu.

- **eshi-tapuetaatishut auen tshishe-utshimau-aitunit**

Ekuanna neni tiapuetatishuin aitenitakanit anite tshishe-utshimau-aitunit kie ma eukuan ne eshi-nishuapamitishuin

Tshipa tshi mate uiten eshi-tapuetaatishuin tshishe-utshimau-aitunit e nukuitishuin anite ne peiku e uitshiaushin, e itutein anite miamuitunanut kie ma tshetshi tain anite mamu ka mamuituht anitshenat kanimashkuaitsheshiht.

- **Aiamieun**

Shaputuepanu nete min
e passiuetshinakanit...



Tipenitamun
tshetshi tapishkut
auen ishi-
nishtuapamakanit
mak tshetshi nashak
utipenitamuna mak
utipenimitishuna

10

• Mashkutunak auen utinniun anite ishkueua kie ma napeua e uinakanniti

• ishkueu, napeu e uinakanit

Eukuan ne muk^u tshiam ua uinakanit ishkueu kie ma napeu.

• Eshinakuannit auen utinniun

Eshi-inniunanut eukuan ne e tshitapatakannit auen eshinakuannit utinniun anite uikanisha. Eukuaneni umenua ua uitakanniti:

- > ussinitshishu, tshisheishkuess, kanipausht, kaiapikunitishut, kauitapimituht
- > uetauassimit auen kie ma mauat, ashit ume e uitakanit uekupaniemit
- > anite etat ka peiku-nitautshinaushunannut
- > utshinuemakana kie ma utshinuemakana uatapamaniti auennua.

• Aimun

Tshipa tshi uitakanu tshin tshitaimun kie ma kutak aimun eshi-aimiek^u anite mitshuapit, atusseunit kie ma anite ait. Iapit ne tshipa tshi uitakanu etueiek^u.

• Ashuapamaushun

Ne ashuapamaushun e uitakanit namaieu ne muk^u tshiam uatakanit e ashuapamaushut auen mak e minuinniut. Kassinu anite pushipanu tshekuan ne e uitakanit ashuapamaushun, miam pessish tshe nashauakanit auen katshi minuinniut mak nemenu tshe ishpish patshitinakanit tshe anueshit katshi minuinniut.

• Eshpanit tshitinniunit

Tshipa tshi umenua uitakanua tshitatusseun, tshikanieun (miam mate mitshim-shuniau katshitinamini), tan etapin tsheshkutamakauin kie ma natamik^u auen ka papamutet.

• Massiun kie ma tshekuan ka apashtakanit tshetshi nashipannit nenu ishpish massit

Massiun e uitakanit eukuaneni umenua iapit ua uitakaniti:

- > eka shuk^u tshi aiatshit auen uiat (miam mate: auen apu tshi apashtat ushkata, e ueshami-uinnut auen, eka ka napit auen, eka ka naitak^u).
- > ka tshipishkakut anite umitunenitshikanit kie ma ushtikuanit (miam mate eka minushtenit ushtikuan kie ma metshimushiniti anite kamatshikaunit kie ma ishkutuaput)
- > eshi-natshishkak auen utinniunit e tutakut tshetshi eka minu-nashak utipenitamuna.

Umenua tshipa tshi apashtakannua tshetshi nashipannit nenu ishpish massit

Akushiu-tetapuakan kie ma atimua tshetshi tshissinutaikut. Ek^u ne auen tshetaimuakanit tshetshi pitutshet ataitshuapit e tshissinutaikut atimua, iapit ne ishi-uitakanit « auen eka ka minu-utinakanit » miam ne peikuan tshetaimuakanit auen tshetshi pitutshet usham massiu.

E minu-uitakanit

« Ne auen eka ka minu-utinakanit » ishi-uapatakanu miam auen ka tshitapamakanit ait eshinakushit, ne ua issishuenanut auen apu minu-tutuakanit miam nenua kutaka.

Akuak^u! Tshipa tshi ishinakuannu auen tshetshi eka minu-utinakanit at ishi-aitutuakanit miam kutaka auennua, eka ait ishi-tshitapamakanit. Miam ume mate : auen eka ka uapatak eka tshi peshuati utema anite utatusseunit usham itashtenu anite nenu atusseutshuapit umashinaikannit, iapit anitshenat kassinu kaiatussesht e katshitaukuht nenu mashinaikannu. Ne eshpanit uemut takuan anite “upime auen ka anakanit”.



Tipenitamun
tshetshi tapishkut
auen ishi-
nistuapamakanit
mak tshetshi nashak
utipenitamuna mak
utipenimitishuna

10.1

Apu auen tshi ashpatshishimuatshet nenu etenitakushin tshetshi ut **nanutshikak^u**.

E minu-uitakaniti neneni « passe etenitakushit auen »

Itenitakushuna ute enat uitakanua eshkushtet 10.

E minu-uitakanit

E nanutshiakanit auen eukuan ka katshitaimuat auen auennua eshpitenitakushiniti kie ma umitunenitshikannit kie ma uiannit.

Ka nanutshiakanit auen mitshetuait tshipa tshi ishinakuan. Tshipa tshi aimunu auen apashtau (eshi-uitamuat auennua tshetshi akuiat, ka natu-shetshimat auennua, ka manenimat auennua, kie kutak tshekuan) kie ma e tutak auen tshekuannu (e mashikuat auennua, anite ut unashinataikanit eshi-nutshiat auennua, mak natamik^u etashinataitshet auen iapit e nanutshiat auennua, kie kutak tshekuan).

Iapit e uitakanit e nanutshiakanit auen, aimuna kie ma e tutaki tshekuannu kau kau e tutakanit. Muk^u peik^u tshekuan tutakaniti iapit tshipa tshi ishi-utinakanu ka nanutshiakanit auen, miam ne meshta-akuatshipaniti.

11

Apu tshi unuipanitain aimun « eka ka minu-utinakanit » anite mamu katananut, miam mashinaikan e apashtakanit, muk^u eshinakuak tshissinuatshtakan. Apu tshika ut tshi natuenitamut kutak auen tshetshi tutak ne tshin ua tutamin.

12

Apu auen tshi anuetashk tshetshi tshishtapanitakanit kauaeshtakanit-aitun ashit tshin ui anite:

- **Anite kauaeshtakanit-aitun katshitaikanua matshunisha kie ma atusseuna petshitinkaniti anite mamu katananut mishue e uitakanit;**

E minu-uitakanit «petshitinkaniti anite mamu katananut mishue»

Ne aimun iapit katshitaikanua matshunisha mak atusseuna ka patshitinkaniti anite auenitshenat nenu kiatshitaukuht, miam mate katshishkutamuakanishiht.

Tipaikatshetau ume « kauaeshtakanit-aitun »

Nishtutatun-mashinaikan (miam mate ka mashinatautishunanut mashinaikanuan anite ne mitshuap ka auiashunanut kie ma nishtutatun-mashinaikan atusseu-shunia), mashinaikan eshi-nakatamatshenanut, mamu kanishtutatunanut, auen tshe punit e atusset kie ma ka ishi-tshishikashuin anite ut tshikanieunit, kie kutak tshekuan.

Tshishe-utshimau-mashinaikan eka e animanakuak anite uatakanniti auen utipenitamuna mak utipenimitishun

Mak

- **Ne auen ashanam^u nenu aimunnu eka ka tapuetakannit ne e uitakanit eka ka minu-utinakanit auen.**

E minu-uitakanit

Nenua ui uitakannua aitenitakushit auen ka mashinataikannit anite eshkushtet 10.



Tipenitamun
tshetshi tapishkut
auen ishi-
nishtuapamakanit
mak tshetshi nashak
utipenitamuna mak
utipenimitishuna

13

Apu auen tshi ashushtat ne e uitakanit « eka ka minu-utinakanit auen » anite kauaeshtakanit-aitunit.

Takuaki anite nishtutatun-mashinaikanit eka ka minu-utinakanit auen, apu minuat ne etashtet. Miam eka tekuaki tshipa ishi-nishtutakuan.

Minu-uitetau ne « eka ka minu-utinakanit auen »

Ne etashtet anite ne e uitakanit « eka ka minu-utinakanit auen » eka ishpenitaki nenu tipenitamunnu tepishku auen tshetshi tutuakanit (uapatamuk^u ne eshkushtet 10).

14

Nenua eshkushteti 12 mak 13, kiatshitaikanit ne « eka ka minu-utinakanit auen » anite kauaeshtakanit-aitunit, apu katshitaikut ne auen ka patshitinak ukatshipaikanishim tshetshi auiashut miam umenua ishi-katshitaikanikai:

- Ne katshipaikanisht anite mitshuapit takuan anite epit ne auen kie ma uikanisha

- Ne auen muk^u peik^u katshipaikanishinu auiashu

- Ne auen apu tshika ut ui uauitak e mishituepanitat miam tshetshi auiashut katshipaikanishinu, mashinaikannu e apashtat kie ma kutakanu tshekuannu tshetshi nenu uauitak



Tipenitamun
tshetshi tapishkut
auen ishi-
nistuapamakanit
mak tshetshi nashak
utipenitamuna mak
utipenimitishuna

15

Apu auen tshi ashpatshishimuatshet aimunnu eka tiapuetakannit ne e uitakanit eka ka minu-utinakanit auen tshetshi ut katshitinamin e pushiakanit auen e autatshimakanit kie ma tshetshi itutein anite mamu katananut. Iapit apu tapuetakanit tshetshi tshitaimakauin tshetshi aitutakauin kie tshetshi minikauin tshekuan eshi-patshitinkanit anite mamu katananut.

E minu-uitakanit ume « aimun eka tiapuetakanit “eka ka minu-utinakanit auen” »
Nenua ui uitakanua aitenitakushit auen ka mashinataikaniti anite eshkushtet 10.

E minu-uitakanit ne « anite mamu ka tananut »

Umenua ui uitakanua atauitshuapa, mitshishutshuapa, kamitshishunanut, kamatau-pikutahat auenitshenat, kamatau-pikutakanit, ka tshishtikanikatet assi, katshishkutamatsheutshuapa, aiamieutshuapa, assit kamanukashunanut kie ma ne ashit ka mitshuaputi utapana.

16

Atusseun e uitakanit, apu auen ishinakuannit tshetshi ashpatshishimuatshet **aimunnu eka tiapuetakannit ne e uitakanit eka ka minu-utinakanit auen** tshetshi ut ui eka minu-tutakuin ne tshin eshinakuak tshetshi tutakuin miam umenua e uitakanikaniti:



- Eshi-pimutenanut e utinakanit auen tshetshi atusset kie ma nikan ka utinakanit auen

- Eshpitenitakuannit anite tshe atusset

- Tshishkutamatshleun kie ma tshe tshishkutamuakanit nenu atusseunnu

- Eshi-natuenitakanit atusseunit (tshe ishpish kutshipaniakanit auen atusseunit, kanieun mak nenua kutaka tshekuanna e pushipaniti atusseun e uitakanit)

- Tshe ashanakanit, tshe nakauakanit uenapissish kie ma tshe unuishpimitakanit

- tshe amatshuepaniakanit, ait tshe itishauakanit kie ma tshe ashu-pitutshet kutakanu atuseunnu

E minu-uitakait ume «aimun eka tiapuetakanit “eka ka minu-utinakanit auen” »
Neneni uitakanua etenitakushit auen meshinataikaniti anite eshkushtet 10.

Tshishe-utshimau-mashinaikan eka e animanakuak anite uatakanniti auen utipenitamuna mak utipenimitishun



Tipenitamun
tshetshi tapishkut
auen ishi-
nishtuapamakanit
mak tshetshi nashak
utipenitamuna mak
utipenimitishuna

17

Apu auen ishinakuannit tshetshi ashpatshishimuatshet aimunnu eka tiapuetakannit ne e uitakanit **"eka ka minu-utinakanit auen"** miam tshetshi eka tain anite kie tshetshi katshitinamin ne ishi-pakushenitamin:

- Mamuitun anite atusseunit utshimauat

- Mamuitun kaiatussesht ka katshitinahk kanieunnu

- Mamuitun auenitshenat ka tutahk peikutau atusseunnu

- Anitshenat ka tshissinuatshiakaniht kaiatusseshiht, (*utshimauat ka takuaitsheht, kaimishiht, natukunishat...*)

Iapit apu ishinakuak tshetshi ashpatshishimuatshet auen nenu aimunnu eka tiapuetakanit tshetshi ut nakaukauin uenapissish kie ma unuishpimitikauin anite ut mamuituna kie anitshenat ka tshissinuatshiakaniht kaiatusseshiht.

E minu-uitakanit ne «tshetshi ashpatshishimuatsshenanut aimun eka tiapuetakanit tshetshi ishi-pimutenanut "eka ka minu-utinakanit auen"»

Nenua ui uitakanua aitenitakushit auen ka mashinataikaniti anite eshkushtet 10.

18

Mashinaikanitshuap ka mashinatautishunanut tshetshi atusset auen apu tshi ashpatshishimuatsshenanut ne aimun **"eka tiapuetakannit tshetshi eka minu-utinakanit auen"** tshetshi ut tatipan uauetashtat natuenitamu-atusseun-mashinaikannu nenu kiatshitinak, tshetshi tipan-ashtat kie ma tshetshi shash atushkatak, kie ma miam ashu-minat nenua uetshimauniti anite atusseunit.

E minu-uitakanit ne aimun « eka tiapuetakanit tshetshi eka ka minu-utinakanit auen »

Nenua ui uitakanua aitenitakushit auen ka mashinataikaniti anite eshkushtet 10.

Tshishe-utshimau-mashinaikan eka e animanakuak anite uatakanniti auen utipenitamuna mak utipenimitishun



Tipenitamun
tshetshi tapishkut
auen ishi-
nistuapamakanit
mak tshetshi nashak
utipenitamuna mak
utipenimitishuna

18.1

Ne kaiatussesht-utshimau apu ishinakuannit tshetshi ishi-kukuetshimishk nenua passe tshin tipan etenitakushin anite meshinatautishun atusseunit kie ma anite e pimipanikauin tshetshi katshitinamin atusseun.

E minu-uitakanit « nenua passe tshin tipan etenitakushin »

Nenua ui uitakanua etenitakushit auen ka mashinataikaniti anite eshkushtet 10.

Apu takuak anite tshetshi kueshte patshitinamin aimun, patush ume ishpanit:

- **Ne eshi-kukuetshimikauin katshitaitshemakan anite ne atusseun ka tshissinuatshiakaniht kaiatussesht tipan ka itenitakuak, ne ishi-natuenitakanit tshetshi ishi-kanuenitashut auen. (uapatamuk^u eshkushtet 20)**

- **Kaiatussesht-utshimau, mashinaikanitshuap shetshen ka atussenanut kie ma mashinaikanitshuap tshetshi minu-tutuak auennua ait uetshipanniti mak tshika ui takuan ne eshi-kukuetshishemunanut tshetshi ut tutak utatusseun (uapatamuk^u eshkushtet 20)**

- **Ishinakuan ne tshetshi takuak kukuetshishemun tshetshi ut tutakanit ne atusseun ua tutakanit tapishku tshetshi tutuakanit auen**

Atusseun ka ui tutakanit uitshiuu miam tshetshi utinakanit auen tshetshi atusset kie tshetshi pimutakanit ne aimun auenitshenat shash anite etaht nenu tipan ka mamuituniti shukushuk^u eka ka minu-utinakaniht auenitshenat (Innuat, ishkueuat, kamassiht, maniteuat, eka shuk^u ka nukushiht).

Anitshenat auenitshenat tshipa ui ishi-kanuenitashuat miam nenua kutaka kananatu-atusseniti.



Tipenitamun
tshetshi tapishkut
auen ishi-
nishtuapamakanit
mak tshetshi nashak
utipenitamuna mak
utipenimitishuna

18.2

Ute umenua nish^u uatakaniti tshipa ishpanu, ne kaiatussesht-utshimau apu ishinakuannit tshetshi ashanik^u anite atusseunnit, tshetshi unuishpamitishk^u kie ma tshetshi anuenimishk^u muk^u ne **ka tshi patashtaukauin**, tshin ishkuieu kie ma napeu katshi **mishta-matshi-tutamin kie ma e anuenimikauin**:

- **Ne ka ishi-matshi-tutamin apu apishish katshitaitshemakak ashit ne atusseun**

Tshetshi uaueshi-tipapatakanit ne tshipa ishi-katshitaitshemakan, tshipa tshitapakanu eshpitenitakuak ne ka matshi-tutakanit, tan ishpush ishpanipan, tanite ka ishpanit mak tanite ne uet tshi ishpanit ne ka matshi-tutakanit, eshinakuak ne tshipa ishi-atussenanu, auenitshenat kiatshitaukuht mak tekuanit utatusseunnuau anite etusseht.

Miam mate:

Auen ka patashtauakanit katshi kushtikushit e pimipanitat utapannu, tshipa tshi unuishpimitakanu miam ishinakuannit utatusseun tshetshi pimipanitat mishta-utapana.

- **Tshikatshitinen kashinamatun ne ut ka ishi-matshi-tutamin**

Kashinamatun iapit ishi-uitakanu « Tshepaikannit auen umatshi-tutamun-mashinaikan anite kauaueshtakanit ».

Akuak^u! Utshimau-kaiatussesht tshipa tshi unuishpimiteu auennua eka eshpishiniti tshetshi atussenniti usham tshipauakannua.

Kie ne utshimau-kaiatussesht ishinakuannu tshetshi tshitapatamuat pet utat ka ishi-uaueshiakanniti nenua ukupaniema.

Tipenitamun
tshetshi tapishkut
auen ishi-
nishtuapamakanit
mak tshetshi nashak
utipenitamuna mak
utipenimitishuna

19

Utshimau-kaiatussesht tapishkut tshika ishi-tshishikueu ukupaniema anite peikutau etusseniti mak peikutau eshinakuannit utatusseunnu. **Tapishkut tshika ui aitutueu.**

E minu-uitakanit

Tshipa tshi ishinakuan, nemenua uitakanua eshi-mautatshemakannit anite ukanieunit mak eshi-uitshikut ishpish nenu shashish atusset, eshi-natuenitamuakanit tshetshi nashak anite atusseunit kie ma kutaka tshekuana eshi-natuenitakaniti tshetshi ut minushtakanit kanieun. (Miam mate : eshpitenitakuak atusseun, tshe ishi-uaeshi-tshitapatakanit, mak kutaka tshekuana).

Ne utshimau-kaiatussesht apu tshi ashpatshishimuatshet nenua **passe aitenitakushiniti auennua** tshetshi uapatakanit tatipan eshinakuaki. Muku tshipa tshi ashpatshishimuatsheu nenua eshi-natuenitakanniti umenua uatakanniti, tshetshi ma peikutau aitapashtakuenit kupanieshat:

- Shashish ka pet atusset
- Auen eshi-kanuenitashut utatusseunit, mishta-uetshu
- Tatupipuna ishpish atusset
- Eshpitenitakuannit utatusseun
- Ishpish tutak atusseunnu
- Anu takut tatutipaikana ka atusset

Kie e uauetinakanit kanieun kie ma ne ua tutakanit atusseun tshetshi tapishkut ishi-kanieunanut eka e takuak ne auen eka ka minu-utinakanit e tshitapatakanit ishkueu kie ma napeu, mishu ishpitenitakanikau eshi-takuaimatshenanut anite Uauetashueunit ne e tshitapatakanit tshetshi tepishkupanitakanit kanieun.

E minu-uitakanit « nenua passe etenitakushit auen »

Nenua ui uitakanua etenitakushit auen ka mashinataikaniti anite eshkushtet 10.

Tshishe-utshimau-mashinaikan eka e animanakuak anite uatakanniti auen utipenitamuna mak utipenimitishun



Tipenitamun
tshetshi tapishkut
auen ishi-
nishtuapamakanit
mak tshetshi nashak
utipenitamuna mak
utipenimitishuna

20

Aishpanit ute neme ka uitakaniti, apu takuak anite ne « eka ka minu-utinakanit auen » at shuk^u peik^u auen ashpatshishimuatshet **passé nenu etenitakushiniti auennua**, tshetshi ut ui ait aitutakauin:

- **Anite atusseunit natuenitakanu tshetshi pikutat auen mak tshetshi ishi-kanuenitashut.**

Miam mate

Utshimau-kaiatussesht tshipa tshi natuenitam^u tshetshi akaneshau-aiminanunit, miam ui apashtakanit ne aimun anite atusseunit.

- **Shatshitun, minu-aitun, aiamieun, tshishe-utshimau-aitun kie ma katshishkutamatunanut tshe ut minu-tutuakaniht maniteuat.**

Mashinaikanitshuap eka natu-kanieuatshenanut aitatusseshtuakanit auen, kie ma mashinaikanitshuap ka uauitshiakaniht ka atasseshiht.

Miam mate

Mitshuap ka kanuenimakaniht ishkieuat ka mashishkueuatakanit, tshipa tshi utineu muku ishkieua tshetshi atusseniti, tshetshi uauitshiaushiniti.

Atusseutshuap ka aitutatishut ka uauitshiat ka atasseniti tshipa tshi ishinakuannu tshetshi

E minu-uitakanit : « nenua passé etenitakushit auen »

Neni ui uitakanua ka mashinataikaniti anite eshkushtet 10.



Tshishe-utshimau-mashinaikan eka e animanakuak anite uatakanniti auen utipenitamuna mak utipenimitishun



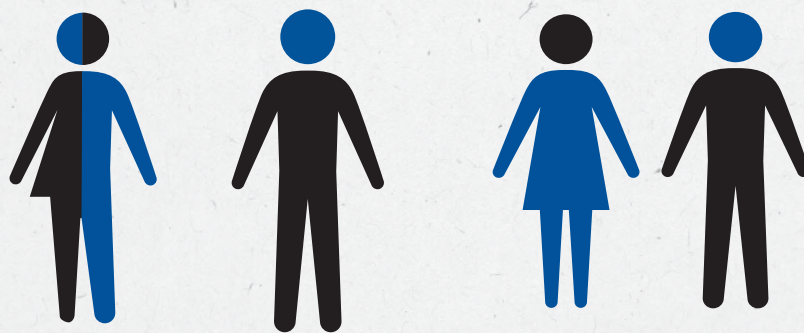
Tipenitamun
tshetshi tapishkut
auen ishi-
nishtuapamakanit
mak tshetshi nashak
utipenitamuna mak
utipenimitishuna

20.1

Nishtutatun-mashinaikan mak umenua takuaimatsheuna tshipa tshi ashpatshishimuatshenanu etatupipuneshin, e ishkuuein kie ma e napeuin, e nipauin kie ma eka nipauin kie kutaka eshi-katshitaukun, tshetshi minuinniune tshetshi ut tipan ishi-aitutakauin :

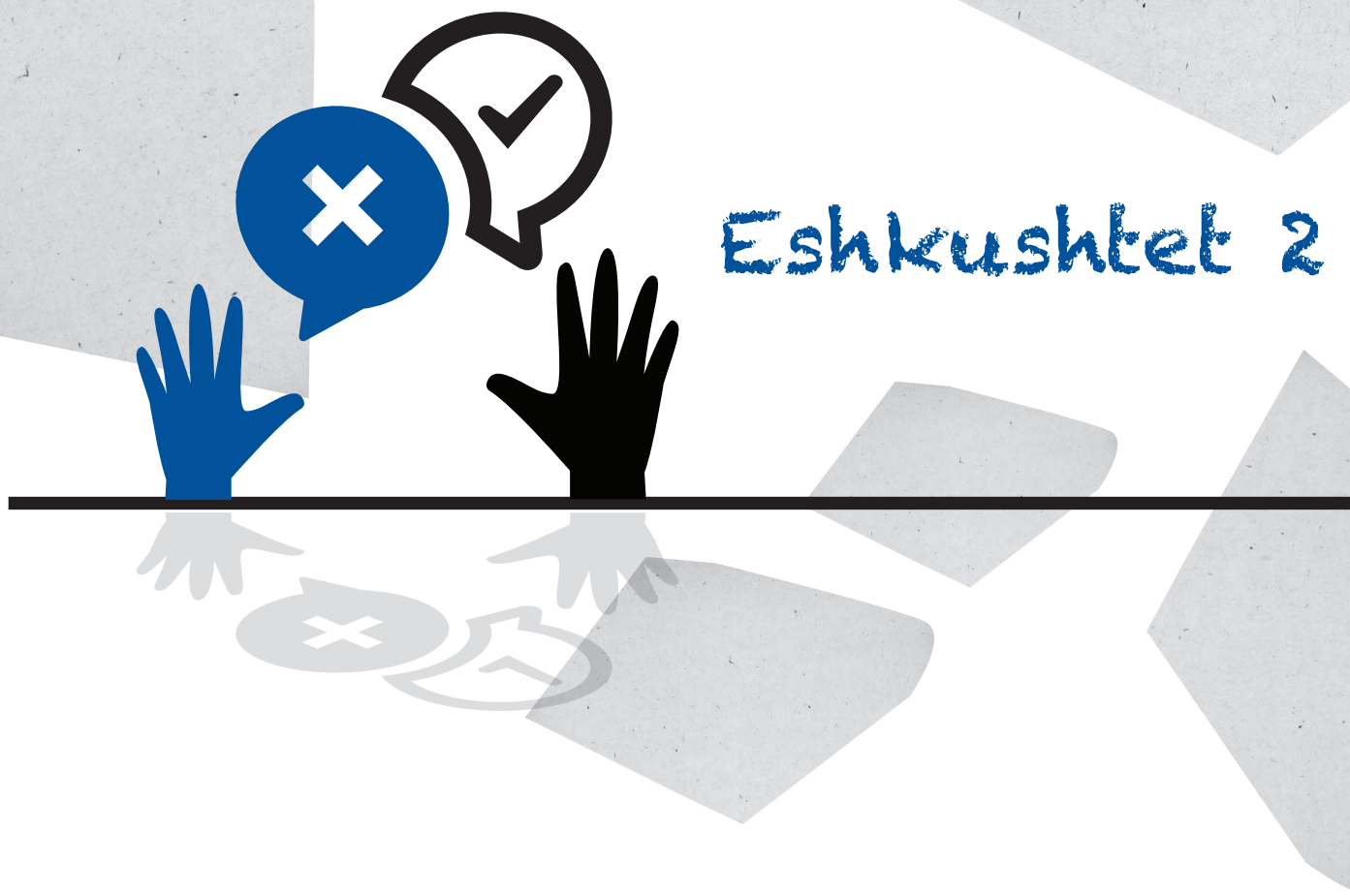
- Nishtutatun-mashinaikan ka tshishikashunanut tshe tshishpeuatikut auen miam akushiti kie ma ka mautat auen shunianu
- Eshi-takuaimatshenanut eshi-tshishikashunanut anite ut tshikanieunit, tshe punipanit etussein, ka mautakanit shuniaue kie ma ka tshishikashunanut tshe ut tshishpeuatitishut auen miam akushiti
- Takuaimatsheun mishue e tshitapakanit ka mautakanit shuniaue kie ma ne tshishikashuin tshek natu-itini

Ne eka ka minu-utinakanit auen, tapuetakanu miam nenu katshitaukut kie ma ne aitun eka tiapuetakanit "eka ka minu-utinakanit auen", uitshiueti tshetshi uitakanit kueshtikushin.



Tipenitamuna
tshishe-
utshimau-aitun

Eshkushtet 2



21

Ishinakuan tshetshi **natshi-ashtain** mashinaikana anite ka mashinatutishuht auenitshenat anite kamishta-utshimau-aiminanut Uepishtikueiau-assit.

E minu-uitakanit

Tshipa tshi natshi-ashtan ne mashinaikan anite ka mashinatutishuht auenitshenat mak tshipa tshi minau ne pitau-tshishe-utshimau kie ma tshishe-utshimau anite Uepishtikueiau-assit. Tshipa tshi iapit pitutepanitan anite ut atusseu-katshitapatakanit anite ut Web ka ishinikatet, iapit anite tshishe-utshimau-mamuitunit Uepishtikueiau-assit. Tshipa tshi mishtikushiusteue kie ma akaneshaushteue.

22

Ishinakuan tshetshi mashinatutishun kie ma tshetshi tshimanitishun anite **kamashinatutishunanut**. Muk^u tshika ui **ishi-kanuenitashun** miam eshi-natuenitakanit anite Uauetashueunit.

E minu-uitakanit

Ne kamashinatutishunanut tshipa tshi anite takuan Uepishtikueiau-assit, utenat kie ma katshishkutamatunanut.

Mate : « eshi-natuenitamakauin »

Tshetshi mashinatutishunanut anite ka utshimatshenanut Uepishtikueiau-assit, tshika ui kutunnuqipuneshin ashu nishuaush kie ma anu, tshika ui ishi-uinikun Kanata-innu mak tshetshi apin anite Uepishtikueiau-assit enuet kutuasht tatupishimua.



Tipenitamuna
kauaueshtakanit

Eshkushtet 3



Ishinakuan umenua tipenitamuna uatakaniti anite kauaueshtakanit e patashtaukauin eshi-atamitshikakuin, kie ma miam uitakaniti tshitipenitamuna mak tshekuana tshe tutamin:

- **Tipenitamun tshetshi tapishkut tutakauin, miam ne kutak auen etutuakanit**

- **Tipenitamun tshetshi natutakauin anite e mitshetinanut**

Kassinu tshekuan eshpanit anite kauaueshtakanit, kassinu auen tshika tshi tau anite. Kassinu auen tshi natshinatutam^u, iapit tshin.

- **Tipenitamun tshetshi natutakanit muku anite kauaueshtakanit, kuishku ka ishi-pimutenanut kie tepenimitishut, tipanishiu**

E minu-uitakanit ne « eshinakuak tshetshi natutakuin »

Ishpanit patush tshetshi tshishpeuatitishun, tshetshi uapatiniuein eshi-kanuenitamin tshekuan tshetshi tshishpeuatitishun mak tshetshi minu-uauitamin ne tsheshpeuatitishun.

E minu-uitakanit « kuishk^u ka itenitakuak »

Kauaueshtakanit tshika ui tipanishiu kie apu tshika ut ui anu minu-uitshiat peik^u auennua.

E minu-uitakanit ne « e tipenimitishut, e tipanishit »

Kauaueshtakanit mak ne auen mashten tshe patshitinak utaimun, apu tshika ut ui tshinuemit kie ma tshetshi mamu atusseiek^u, kie anitshenat kutakat auenitshenat kiatshitaukuht nenu tshitipatshimunnu.

Miam mate: « kauaueshtakanit »

Tshipa tshi utshenat uinakanuat:

- > Nikan-kauaueshtakanit, (miam mate: Kamishta-kauaueshtakanit mak Uepishtikueiau-assi-kauaueshtakanit)
- > kauaueshtakanit takuaimatsheun, (miam mate: Kauaueshtakanit atusseunit)
- > ka aimuatakanit katshipikapaunanut (ka mamuituht kaiatusseshiht)

Shaputuepanu nete min e passetshinakanit...



Kauaueshtakanit tshipa tshi issishueu anite pemipanitunanit **tshetshi eka auen pitukaiakanit** miam ishinakuak ne tshetshi tutakanit, e tshitapatakanit ne **akua tshetshi aitananut kie tshiamishiunanut anite mamu katananut.**

E minu-uitakanit

Eukuan ne eshikatet « eka auen ka pitukaiakanit ». Ne eshpaniti, aimuna petshitanakaniti tshipa tshi anite uinakanuat auenitshenat nenu kiatshitaukuht anite mekuat pemipaniakanit auen kauaueshtakanit, apu ne tshika ut ui uitakaniti.

Miam mate : ne e uitakanit « akua tshetshi aitananut kie ma tshiamishiunanut mamu katananut »
Tshetshi eka uauitakannit uikanishimauat utinniunnau, miam ne ka apikutishunanut kie ne auen tshe kanuenimat auassa, nakana ishinakuan tshetshi eka auen pitukaiakanit.

24

Apu auen tshi nakaimashk^u tshitipenimitishunnu kie ma tshetshi eka tshi nashamut tshitipenitamunnu, tshika takuan uin mani tshe tapuetakanit miam itashteti anite uauetashueunit.

24.1

Apu auen tshi mishta-tatatshinishk^u anite tshiat. Iapit apu auen tshi makunak tshimatshunishima **e ueshami-aitit.**

E minu-uitakanit

Nianatuapatitshenanuti, patush ne ishpanu miam kamakunueshiht eshinakuanniti tshetshi makunahk^u tshekuau anite tekuannit (miam mate miakunakaniti mashinaikana anite atusseutshuapit).

Miam mate ne e uitakanit « ka ueshami-aitinanut »

Ne kamakunuesht apu tshi nakanishk anite meshkanat, shetshen, mak tshetshi nanatunitshet tshimatshunishimit kie ma anite tshimassimuteutit.



25

Kamakunueshiht tshika ui akua tshiam tutakuat **mak e ishpenimishkau** miam makunishkau kie ma **kanuenimishkau**.

E minu-uitakanit ne «tshiam-inniunit mak ishpenitamunit»

Kamakunueshiht apu tshi ushkuishtashkau kie ma ueshami-aitutashkau ua makunakauin kie ma tshetshi kanuenimikauin.

E minu-uitakanit ne « ka kanuenimakanit auen »

Ne put uitakanitshe e kanuenimakanit auen mitshuapit ka kanuenimakanieht kamakunakanishiht (miam mate kamakunueshiutshuapit, tshipututshuap).

Put anite uenapissish ka kanuenimakanieht, ne ua issishuenanut kamakunueshiht nakaneuat auennua mak apu minaht tshetshi tshituteniti, mishkut apu nenu tshipauaht. Nenu miakunaht tshetshi nenu nanatu-tshissenitahk tshekuannu mak tshetshi uitahk tshi tshipauaht auennua kie ma mauat.

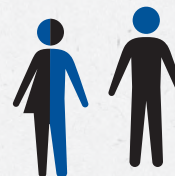
26

Miakunakaniti auen kamakunueshiutshuapit kie ma anite ait ka kanuenimakanieht ka mishanit, takuannu tshetshi miam ishi-tshitapamakanit:



• Etatupipuneshit

• Ishkueu a kie ma napeu



• Etenitakushit umitunenitshikanit



• Etenitakushit uiat eshinakushit



27

Auen ka ashuapatak tshetshi tshishi-uaueshiakanit tshipa tshi makunakanu anite kamakunueshiutshuapit kie ma anite ka mishanit kamakunueshiutshuapinu. Ne ishinakuaki, ishinakuannu tshetshi tipan-anakanit mak nenua kutaka shash neshtuapamakannit katshi atamitshikuakanniti kie mekuat ianuenimakanniti.



28

Ne auen ishinakuannu tshetshi tshissenitak tshekuanu kamakunueshiniti uet kanuenimikut kie ma tshipaukut. Kamakunueshiht ishinakuannu tshetshi uipat uitamuahat nenua miakunaht kie tshetshi minu-nishtutakuht.

28.1

Auen ka atamitshikuakanit katshi matshi-tutak ishinakuannu tshetshi minu-uitamuakanit tan ka ishi-pataik. Kamakunueshiht ishinakuannu tshetshi uipat uitamuahat.

29

Auen ka makunakanit kie ma ka tshipauakanit tshipa tshi e utshepinanut :

- **Katshitinam^u tshetshi uitshikut kaimishiniti ishkuera kie ma napeua**

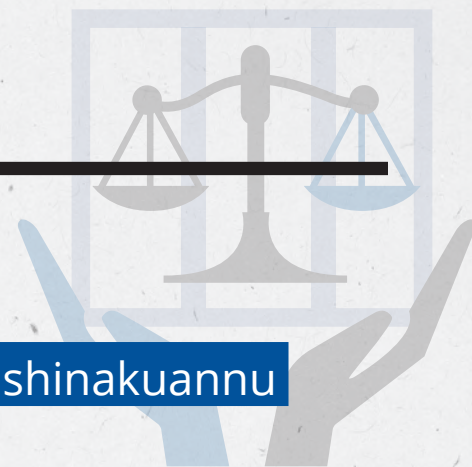
- **Tshipa tshi aimieu uikanisha tshetshi uitamuahat nenu eshpanit**

Kamakunueshiht tshika ui minu-uauitamueuat utipenitamunnua e tshinipinannut.

30

Auen ka makunakanit kie ma ka tshipauakanit tshika ui itutaiakanu anite eshinakuannit tshetshi pimipaniakanit kauaueshtakannit e tshinipinannut, eka nenu tutuakaniti, tshika ui patshitinakanu.





31

Auen ka makunakanit kie ma ka tshipauakanit ishinakuannu tshetshi patshitinakanit miam:

- Issishueti uemut tshe itutet kauaeshtakannit nemenu miam ka ishi-natuenitamakanit

- ashtau shunianu kie ma tshika ui tshishikashu tshetshi unuitishinakanit (miam natuenitamakut kamakunueshiniti)

Ne tipenitamun tshipa tshi nakaikanu, muk^u patush **tshitshue minuanit eshi-patshitinak utaimun.**

E minu-uitakanit

Ne « eshtakanit shuniau », eukuannu nenu tshe ui patshitinak ne auen tshe uapatiniuet tshitshue tshe itutet kauaeshtakannit. Eka ma ituteti, unitau ushuniam.

lapit uitakanu « tshetshi tshishikashunanut tshetshi unuitashinakanit » miam kutak auen patshitinak shunianu (miam mate uikanisha kie ma uitsheuakana).

Miam mate « tshitshue e tapuenanut »

Auen apu uesha shaputue patshitinakanit kueshtikushit anite mamu ka tanannut. Tshika ui tshipauakanu, tshe ashuapatak tshe ishi-uaueshiakanit.

32

Auen eka minakaniti utipenimitishun ishinakuannu **tshetshi aimit anite kauaeshtakannit** tshetshi tshissenitak ut tshi ishpitenitakanniti utipenitamuna. Kamakunueshiht tshika ui patshitineuat miam kauaeshtakannit issishueniti eka eshinakuannit tshetshi makunakanit.

E minu-uitakanit ne « eka minakanit utipenimitishun »

Ne aimun apu katshitaukuht anitshenat ka tshipauakaniht kamakunueshiutshuapit. Tshipa tshi ishinakuannu ne auen ka kanuenimakanit anite akushiutshuapit eka tapuetak.

E minu-uitakanit ne « tshetshi aimit anite kauaeshtakannit »

Eukuan ne eshi-uitakanit auen ka natuenitak *habeas corpus*.

Tshishe-utshimau-mashinaikan eka e animanakuak anite uatakanniti auen utipenitamuna mak utipenimitishun



32.1 Auen ka atamitshikuakanit katshi matshi-tutak ishinakuannu tshetshi eka **minekash ashupatak** tshetshi pimipaniakanit.

33 Auen ka atamitshikuakanit matshi-tutamunu ishi-uinakanu eka ut tshi matshi-tutak nuash tshe ishpish tshitshue uapatiniuenanunit katshi tapue matshi-tutamukue.

E minu-uitakanit

Ait eshi-uitakanit, kauaeshtakanit tshika ui patshitineu nenua auennua eka tshi uapatiniuenanniti katshi matshi-tutak.

33.1 Auen ka atamitshikuakanit matshi-tutamunu, tshika tshi itenitam^u tshetshi eka aimit anite mekuat pemipaniakanit. Apu tshi ushkuishtuakanit tshetshi patshitinak utaimun.

34 Ishinakuan tshetshi mishkutapishtashk **kaimisht,** **kaimishishkueu** miam anite etani **kauaeshtakannit.**

E minu-uitakanit

Anite nashik^u ka mashinaitshenanut (15 000\$, kie ma anu nashik^u), apu tshi mishkutapishtatsheht kaimishiht. Eukuan ne uin ait eshpanit.

MATE: « kauaeshtakanit »

Tshipa tshi utshenat uinakanuat:

- > Nikan kamishta-kauaeshtakanit (miam mate Kamishta-kauaeshtakanit mak Uepishtikueiau-assi-kauaeshtakanit)
- > kauaeshtakanit ka ut uauetashupatet (miam mate: Kauaeshtakanit atusseun)
- > ka aimuatet katshipikapaunanut (ka mamuituht kaiatusseshiht)



35

Auen ka atamitshikuakanit katshi matshi-tutak ishinakuannu tshetshi **minu-tshishpeuatitishut**. Ishinakuannu kie tshetshi kukuetshitshemut kie kau-kau tshetshi kukuetshitshemat nenu auennua petshitinaminiti aimunnu anite ueueshiakanit.

E minu-uitakanit

Tshetshi tshishpeuatitishut auen, ishinakuannu tshetshi tshissenitak eshi-patshitinakannit aimunnu eshi-atamenimakanit tshekuannu kie ka ishpish pet mautakanniti. Ishinakuannu tshetshi uapatak nenua eshk^u eka tshitshipanannit e uaueshtakannit.

36

Auen ka itishkamuakanit matshi-tutamunnu ishinakuannu tshetshi nishtutamuniakanit tshekuannu essishuenannit anite kauaueshtakanit. Tshipa tshi **eka tshishikashu** tshetshi uauitshikut peik^u kaiashuitamatsheshiniti miam eka minu-petak kie ma eka petak, kie ma eka nishtutak nenu aimunnu e apashtakannit.

E minu-uitakanit

Ne tipenitamun eka e tshishikashut auen ka uauitshiakanit, apu takuak ne anite kauaueshtakanit ne e tshitapakanit eshinakuannit auen utinniun (ka apikunitishunanut nipaunit, matshi-aitun ka katakanit, nishtutatun-mashinaikana, eshinakuannit utatusseun mishue auen ka tshitapatak, kie kutakat auenitshenat) Ne uin eshpaniti, ne auen tshipa tshi apatshieu kaiashuitamatsheshiniti muk^u uin nenu tshika ui tshishikashu.

37

37-Patush tshipa tshi anuenimakanu auen eka miam ainit, nenu miam **eka ka tapuetakannit anite nenu mekuat ainit**.

E minu-uitakanit

Uauetashueun e mussipanitat ussi-matshi-tutamunnu, nikan anite muk^u tshitapakanu. Ne auen apu tshi patshishtauakanit ka ainit kie ma ut tshi tutak tshekuannu eka ka tapuetakannit katshi nenu ishpannit.



37.1

Ne auen apu tshi nishuau takut tipapekauakanit peikutau nenu matshi-tutamunnu. Ne ua issishuenanut **apu tshi patashtauakanit nishuau takut** katshi ut patshitinakanit kie ma eshi-uinakanit ka patashtauakanit nenu peikutau ka matshi-tutakannit mak anite peikutau eshpanit.

E minu-uitakanit « auen ka patashtauakanit nishuau takut »

Auen ka patshitinakanit kie ma eshi-uinakanit ka patashtauakanit mak tshe ui natuenitak kau tshetshi pimipaniakanit « nishuau takut petashtauakanit ». Peikutau tshika ishpanu kau pimipaniakaniti miam nene ushkat.

E minu-uitakanit ne « peikutau matshi-tutamun »

Tshipa tshi auen nishuau takut atamenimakanu nene peikutau ka ishpannit, miam nenu ka ishi-matshi-tutak eka peikutau ishinakuannit miam nene ushkat. Tshipa tshi kie nashauakanu anite kamamunakanniti kie ma anite kauaueshtakannit e tshitapatakanit eshinakuannit auen utinniun (miam mate ne auen ka matshi-tutauakanit ua kueshte tshishikakushit).

37.2

Tshipa tshi ishinakuan nenu ka ui ishi-anuenimakanit katshi-matshi-tutak tshetshi mishkutshipanit anite ne auen ka matshi-tutak kie anite mekuat anite kauaueshtakanit tshe uitakanit tshe ishi-anuenimakanit. Ne ishpaniti, ne auen ishinakuannu tshetshi eka mishta-animanit eshi-anuenimakanit.



Tshipa tshi ishinakuannu auen tshetshi ushkuishtuakanit tshetshi patshitinak utaimun ka ishi-uapatitshet anite kauaeshtakanit. Ne ishinakuaki, nenu tshe uitak utaimun ka ishi-uapatitshet apu tshi apashtakanit tshetshi patashtauakanit anite minuut ueueshiakaniti.

Kau netuenitakanit tshetshi uaueshiakanit

Aimun 33.1 anite Tshishe-utshimau-mashinaikanit takuan tshetshi tipan ishi-pimutenanut. Apu tshi ushkuishtuakanit auen ka matshi-tutak tshetshi patshitinak utaimun anite uin e pimipaniakanit kauaeshtakanit.

E minu-uitakanit

Auen ka patshitinak aimunnu tshi apashtakannu anite kauaeshtakanit ne e tshitapatakanit eshpanit auen utinniunit (miam mate ne ka matshi-tutuakanit ua kueshte tshishikakushit).

Muk^u, tshipa tshi ishi-patashtauakanu e **katshinat** miam katshinati mekuat e patshitinak utaimun. Tshipa tshi iapit ishi-patashtauakanu **kamamishkutinak utaimun**, miam mamishkutinak ka ishi-patshitinak aimunnu anite nishuau e kuketshimakanit.

E minu-uitakanit

Ka katshinananut mak ka patshitinakaniti aimuna e mamishkutinakaniti uiatakaniti, nishina nenua matshi-tutamuna.



Tipenitamuna
pakassiun mak
anite mamu
katananut

Eshkushtet 4

\$



Tipenitamuna
pakassiun mak
anite mamu
katananut

39

Kassinu auass ishinakuannu tshetshi tshishpeuatakanit, akua tshetshi tutuakanit mak uikanisha tshetshi nakatuenimikut.

E minu-uitakanit

Tshipa tshi ishinakuannu uetshit uikanisha, uikanishimaua ka nitautshinikut kie ma uikanishimaua ka kanuiaushut. Muk^u eshpaniti ne nanikutini, tshipa tshi kie tau auen nenu eshi-atusset miam uikanishimau eka nashpit e tshinuemat nenu auassa (miam napeu kie ma ishkueu tshanuemat nenu auassa uikanishinua).

40

Tshipa tshi ituten eka tshishikashunanut anite katshishkutamatunanut kassinu auen anite tshi ituteu. Uauetashueun tshipa tshi minu-tshitapatam^u kie tshipa tshi nakaim^u nenu tipenitamunu.

E minu-uitakanit ne katshishkutamatunanut kassinu anite auen tshi tshishkutamuakanu

Nenua ui uitakanua katshishkutamatunanut kassinu anite auen tshi ituteu kaiapishissishiht ka neupipuneshiht nuash patetat ka tatupipuneshiht, peik^u nuash kutuasht ka itapiht mak anitshenat kamamishishiht. Iapit tshipa tshi uinakanuat anitshenat kamishta-tshishkutamatunanut ka ituteht kie ma anitshenat kaishpitishiht.

E minu-uitakanit, uauetashueun tshipa tshi minu-tshitapatam^u kie tshipa tshi nakaim^u nenu tipenitamunu

Katshishkutamatunanut eka e tshishikashunanut kassinu auen tshi ituteu nuash e kutunneupipuneshiht ashu nishuaush mak ka nishunneupipuneshiht ashu peik^u, miam anitshenat kamassiht e uinakanieht.

Anitshenat ka kutunneupipuneshiht ashu nishuaush mak ka nishunneupipuneshiht ashu peik^u, tshipa tshi tshishikashuaht. Muk^u tshika ui tshitapakanu tan ne eshinakuak tshishkutamatsheun. Tshipa tshi takuan iapit tshetshi tshishikashut auen nemenu mashinatautishut, ukatshishkutamatsheu-mashinaikana, e akunitshepanitakaniti utatusseu-mashinaikana, kie ma kutak tshekuan.

41

Uikanishimauat ishinakuannu tshetshi minaht utauassimuaua tshetshi aiamieu-tshishkutamuakanniti mak mitunenitamun-tshishkutamatunnu tshetshi nashatahk nenu utapueienitamunuau. Muk^u tshika ui tutamuat nenu e shapenitaminiti utauassimuaua mak tshetshi ishpenitamuaht utipenitamunnua.

E minu-uitakanit

Tshipa tshi anitshenat katshitaukuahut uetshit uikanishimauat, uikanishimauat ka nitautshinaushut. Tshipa tshi kie ishpanu, uikanishimau ka nitautshinaushut eka e tshinuemaht nenu auassa (miam ne napeu kie ishkueu tshanuenimat nenu auassa uikanishinua).

Tshishe-utshimau-mashinaikan eka e animanakuak anite uatakanniti auen utipenitamuna mak utipenimitishun



Tipenitamuna
pakassiun mak
anite mamu
katananut

42

Uikanishimauat ishinakuannu tshetshi mashinatauajt utauassimuaua anite ne katshishkutamatsheutshuap eka ut tipenitakanit anite Uepishtikueiau-tshishe-utshimat. Ne e naushunakanit katshishkutamatsheutshuap tshika ui mishkut ishpitenitakannua nenua takuaimatsheuna anite ut uauetashueunit.

43

Anitshenat maniteuat ishinakuannu **tshetshi nashahk utaitunnuau** tshetshi ut kanuenitahk mak tshetshi mishituepanitaht.

Miam mate

Anitshenat maniteuat ishinakuannu tshetshi mamuiht tshetshi ut minuatikushiht nenu eshi-inniht.

44

Ishinakuan anite tshitipenitamunit tshetshi **minikaui^u aimun.** Uauetashueun tshipa tshi iapit **nakaim^u nenu tipenitamunnu.**

E minu-uitakanit

Ne tipenitamun tshuitshikunau tshetshi nishtuapatamek^u mak tshetshi natu-tshissenitamek^u:

- > mashinaikana anite tekuaki kassinu anite atusseutshuapa ka mamuihanut mak anite tshishe-utshimautshuapit
- > tshin uetshi tshitipatshimun ne atusseutshuap ka mamuihanut kuenuenitak eshi-uinikuin kie ma ne tipan ka takuak atusseutshuap (miam mate tshitakushiu-mashinaikan)
- > tipatshimun mishue ka pimipanitakanit

Miam mate

Ne e tshitapakanit « tshetshi nakaikanit ne tipenitmun »

Passe aimuna tekuaki anite tshimashinaikanit tshipa tshi katakanaa ashit mikun ka kashteushit e apatshiakanit. Tshipa tshi ishinakuanna neni aimuna tshetshi eka mishituepanitakaniti, kutak auen e katshitaukut.

Tshishe-utshimau-mashinaikan eka e animanakuak anite uatakanniti auen utipenitamuna mak utipenimitishun



Tipenitamuna
pakassiun mak
anite mamu
katananut

45

Ishinakuan anite tipenitamunit tshetshi katshitinamin takuaimatsheuna kie ma tshetshi uitshikuin shuniat miam ishinakuaki ui apashtani. Nenua takuaimatsheuna tshipa tshi ishi-uitshikun tshetshi ut enuet minu-apin.

Miam mate

Ne tipenitamun tshishishpeuatikunau anite nutim etashiek^u tshitshuat Tshipa tshi anite ut « takuaimatsheuna uitshiakanu auen shuniat » tshetshi minupiht tshitauassimuuat.

Mate :« takuaimatsheuna uiatshiakanit auen shuniat »

Tshishe-utshimat shuniaua ka utshipanit tshetshi uauitshiaushinanut.

46

Ishinakuan tshetshi katshitinamin nenua eshi-natuenitakaniti tshetshi nashamin anite atusseunit e kuishkunakuaki mak e tshiam e itenitakuaki. Nenua eshi-natuenitakaniti tshika ui ishpitenitakanua umenua:

• **Uauetashueun**

Tshipa ui ishinakuan,
Ne e uitakanit takuaimatsheun tshe ishi-pimutenanut anite atusseunit, takuaimatsheun minuinniunit mak shutshenimun anite atusseunit mak ne eshi-pimutenanut anite atusseunit taieku anite ka mamuituht kaiatusseshiht.

• **Tshiminuinniun**



• **Tshishutshenimun**

• **Tshetshi minuinniut kie ishpitenimakanit auen anite uiat**



46.1

Ishinakuan tshetshi inniun anite e minuat uashka mak tshetshi ishpitenitakanit anite **eshi-tat auen kie ma eshi-takuak tshekuan.** Uauetashueun tshipa tshi minu-tshitapatam^u kie tshipa tshi nakaim^u nenu tipenitamunnu.

E minu-uitakanit

Anite uashka e minuat eukuan uashka anite eka tekuak tshekuan tshetshi mamashiuat anite tshiminuinniunit. Eshi-takuak tshekuan kie eshi-tat anite auen, eukuannat anitshenat ua uinakaniht mitshetuait ka ishi-inniuht mak eshi-nitautshik tshekuan.

Tshishe-utshimau-mashinaikan eka e animanakuak anite uatakanniti auen utipenitamuna mak utipenimitishun



Tipenitamuna
pakassiun mak
anite mamu
katananut

47

Auenitshenat ka aiamieu-nipauht kie ma ka nipauiakaniht anite ut kauaeshtakannit peikutau ishi-utinakanuat. Peikushinu utipenitamunnuau, peikutau eshi-kanuenitahk tshekuannu kie peikutau ishinakuannu utatusseunnuau tshe ui tshitapatahk.

Tshipa tshi e nishiht utinamuat aimunnu uinuau eshi-katshitaukuht:

- **Matshunisha kie shuniau ka ishi-pimipanitakanit anite uikanishimat**

Miam mate

Utapan, mitshuap, matshunisha mitshuapit, mitshim e aiakanit, matshunisha e aiakaniti, nakana eshi-meshtinakanit, mamu e tutakanit tshekuan uikanishimat, kie kutaka tshekuana.

- **Iapit e nishiht e tshitapamakaniht e tshishkutamuakanniti utauassimuaua**

- **Tshe ishi-inniunanut anite uikanishimat**

Umenua tshe ishi-utinakaniti aimunna :

- > meshta-apatak ishpitenitamun uikanishimat (miam mate aiamieun)
- > tshe ishi-pimutenanut anite uikanishimat
- > auassat utishinikashunnuaua
- > tiapuetakanit tshetshi natukuiakaniht auassat
- > anite tshe apiht uikanishimauat
- > kie kutaka tshekuana

48

Tshishennuat mak kamassiht ishinakuannu tshetshi tshishpeuatakanit **toutes tan ua ishikuakaniht.**

Uikanishimauat kie ishinakuannu tshetshi tshishpeuataht mak tshetshi minaht shetshenitamunnu.

E minu-uitakanit

Uanasse auen ka tutuakanit, eukuan e katshitauakanit eka tshi tshishpeuatitishut kie ma ne auen eka ka tshi patshitinat auennua, eukuan tshe ut uanasse tutuakanit ashit nenua utipenitamuna. Ka katshitauakanit auen shuniat, uanasse ka tutuakanit uiat, umitunenitshikanit, tshiam ka ishi-inniunanut kie ma mamu etashinanut.

Miam auen eka etaniti uikanisha kie ma uikanisha eka tshi tshishpeuatikut kie ma tshetshi ut shutshenimut, eukuanat anitshenat ka aitutuht auennua mamu ka tanannut uinuau ishinakuannu tshetshi utinahk.



Mamuitun auen utipenitamun mak kauassiuht utipenitamunnau ishpenitamuat kie nikan itutauat nenua eshi-uaitakaniti anite Tshishe-utshimau-mashinaikanit nenua auennua utipenitamunnua mak utipenimitishunnua ute Uepishtikueiau-assit.

Nakatuenitamu tshetshi tshishpeuatakanniti auassa utinniunnit, iapit ishpenitamu mak nikan itutau nenua tipenitamuna eshi-nishtuapatakanniti anite Uauetashueunit ne e tshishpeuakanit kauassit.

Nakatuenitamu iapit tshetshi nashatakannit eshi-natuenitakannit anite Uauetashueunit ne e uaitakanit tapishkut auen tshetshi tutuakanit anite utatusseunit anite ut atusseutshuapa mamu etashinanut

UTSHIMAU-MASHINAIKANITSHUAP MAMUITUN

360, rue Saint-Jacques, 2^e étage
Montréal (Québec) H2Y 1P5

Utakapitshenikan atusseu-katshitapatakannit : accueil@cdpdj.qc.ca

Atusseu-katshitapakanit : cdpdj.qc.ca

Kaiminanut : **514 873-5146**

Kaiminanut eka ka tshishikashunanut 1 800 361-6477

Nashaunan



CDPDJ



CDPDJ1



LaCDPDJ



http://bit.ly/CDPDJ_Linkedin

